



Agenda

SAP S/4HANA Cloud Embedded Analytics

Pre-delivered Analytics Content

Embedded Predictive Analytics

Embedded SAP Analytics Cloud

SAP S/4HANA Cloud **Embedded Analytics**



SAP S/4HANA Cloud Embedded Analytics

What is SAP S/4HANA Cloud Embedded Analytics?

Start transaction

Analyze & Predict

Complete transaction

All in one screen



Purchasing manager

Sales Organization		Net Amount
Sales Organization	Sales Organization Year Month	09/2015
1010	Dom. Sales Org 1010	16,751,397.50 EUR
1110	Dom. Sales Org 1110	787,971.12 EUR
1710	Dom. Sales Org 1710	41,473,214.06 EUR
2910	Dom. Sales Org 2910	36,252.25 EUR
3010	Dom. Sales Org 3010	1,693,094.44 EUR
Grand Total		66,742,429.36 EUR

Review detail report

Tile Format: Comparison Tile

Title (KPI): Overdue Payables

(Evaluation): Today (USD)

Select Catalog: Accounts Payables - Analytics

Dimension: OverdueCategoryName

Sorting Order: Measure Ascending

Semantic Color: Neutral

Enter material order



Check budget overview



Tile Format: Comparison Tile

Title (KPI): Overdue Payables

(Evaluation): Today (USD)

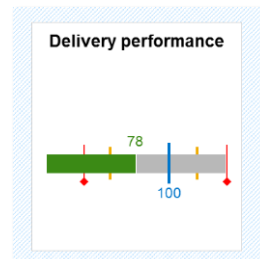
Select Catalog: Accounts Payables - Analytics

Dimension: OverdueCategoryName

Sorting Order: Measure Ascending

Semantic Color: Neutral

Choose best supplier and complete material order entry



Check average supplier delivery performance



Real-time decision-making needed at the moment of risk or opportunity

SAP S/4HANA Cloud Embedded Analytics

Embedded Analytics Tool Types

Tools to Display

Business User

- Analyze the data and act according to insights.



Display	Complexity	Skills
Use Pre-delivered Content	Low	Business knowledge
Use Query Browser	Low	Business knowledge

Tools to Create and Adapt

Analytics Specialist

- Provides custom analytics to Business Users.



Adapt/Create	Complexity	Skills
Identify Data Source	Medium	Business knowledge CDS Views
Create Custom CDS Views	High	Data Modeling CDS Views
Create Data Analyzer Report	Low	Business knowledge
Create Custom Analytic Queries	Medium	Business knowledge Query Design
Create Custom KPI and Reports	Medium	Business knowledge KPI and Report Design

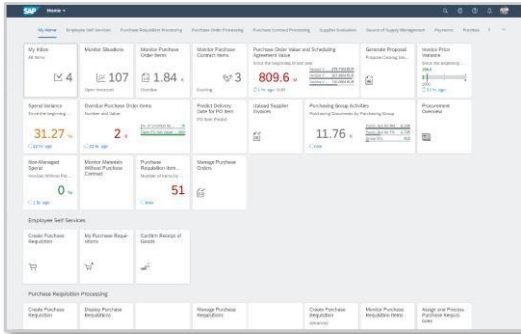
Pre-delivered Analytics Content



Pre-delivered Analytics Content

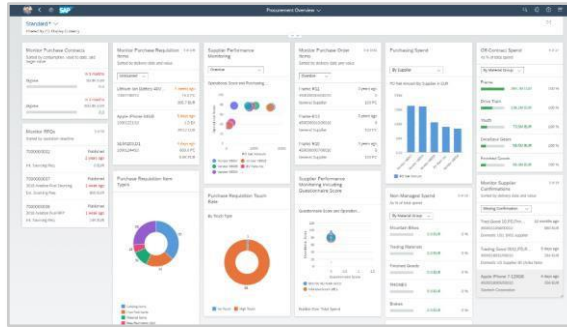
Offering for the Business User

Smart Business KPIs



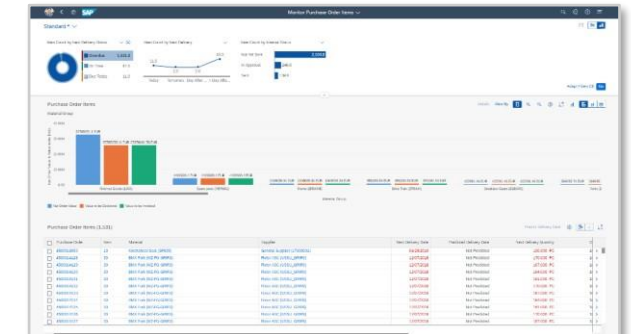
- KPI monitoring on the Fiori Launchpad
- Drill-down into further analytical or transactional apps
- Save personal variants

Overview Pages



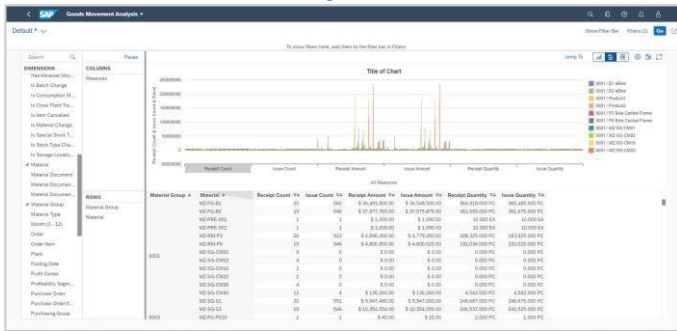
- Consolidated view on a certain domain, e.g. Purchasing
- Information presented in analytical tables and charts
- Take action in the same place or navigate to other apps
- Save personal variants

Analytical List Page



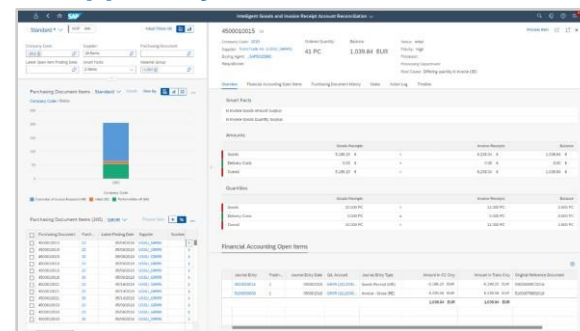
- Generic approach mix analytical/transactional activities
- Display table, chart or a combination
- Take action directly in app or navigate to other apps
- Save personal variants

Multidimensional Reports



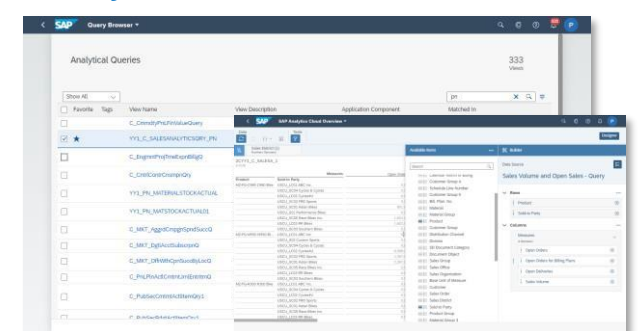
- Analyze and visualize data from multiple dimensions
- Display pivot-table or chart or a combination
- Save personal variants

In-app Analytics and ML



- Combine Analytics with transactional content in one screen
- Insight to action to prioritize based on facts
- Use drill-downs to determine transactional input parameters

Query Browser

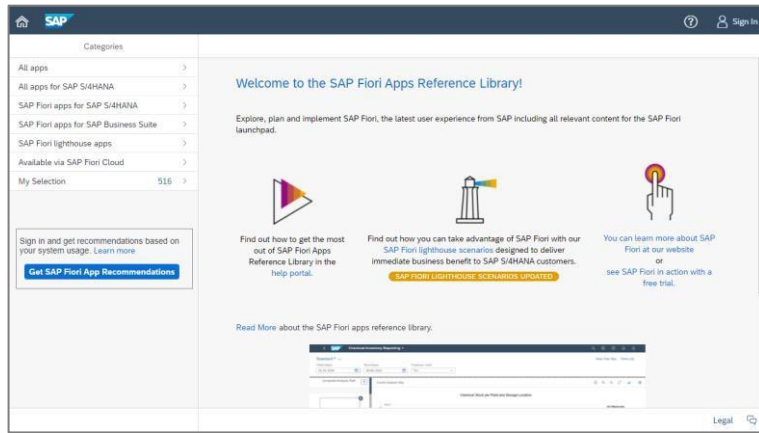


- Quickly and easily search, browse, and tag the analytical queries
- Open query for analysis

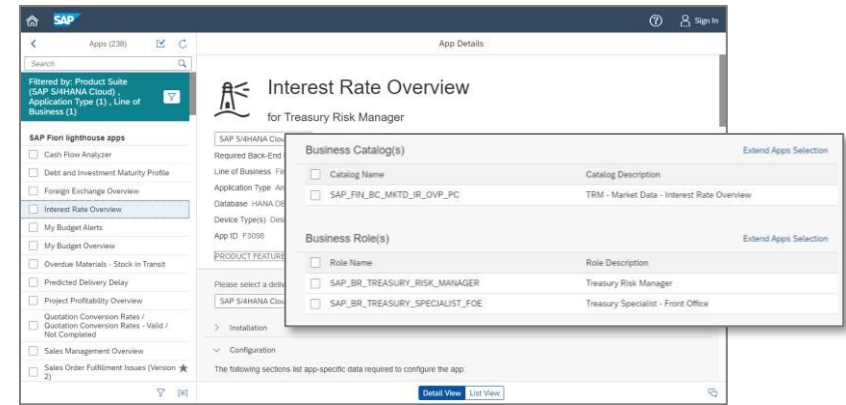
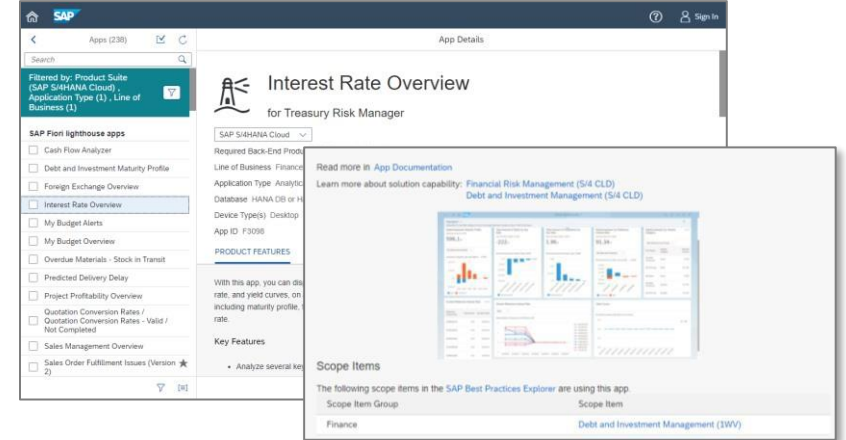
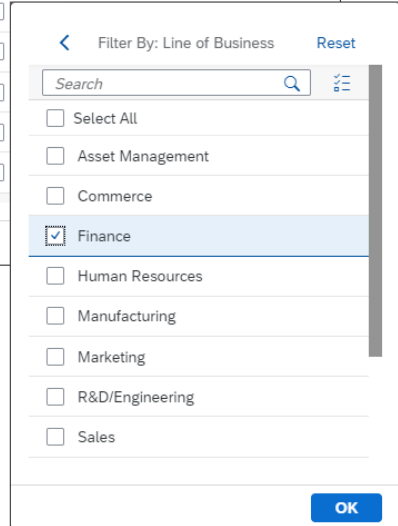
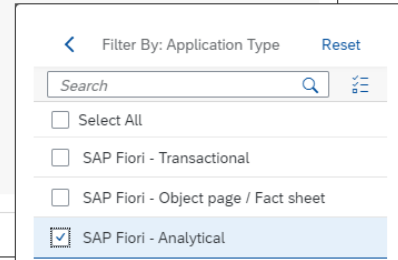
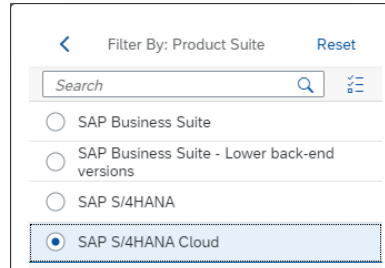
Pre-delivered Analytics Content

Exploring Pre-delivered Analytics Content

SAP Fiori Apps Reference Library



- Get general info
- Learn about features
- Learn how to get started



Pre-delivered Analytics Content

Pre-delivered Content

Most Used Analytical Apps in Logistics

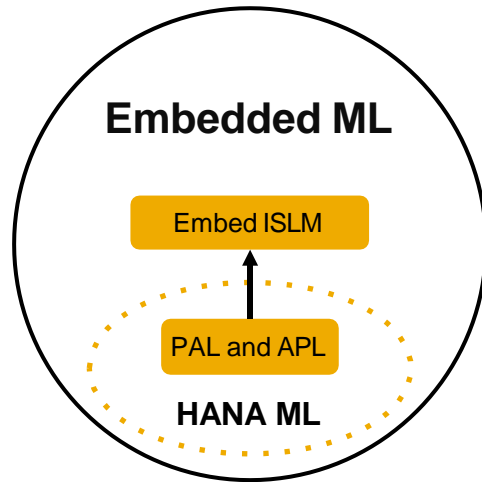
Persona	Analytical App	Line of Business
Internal Sales Representative	Sales Order Fulfillment Issues (Version 2)	Finance, Sales, Service, Sourcing and Procurement
	Dead Stock Analysis	Asset Management, Sales, Sourcing and Procurement, Supply Chain
Inventory Manager	Slow or Non-Moving Materials	Asset Management, Sales, Sourcing and Procurement, Supply Chain
	Stock - Multiple Materials	Asset Management, Finance, Manufacturing, Sales, Sourcing and Procurement, Supply Chain
	Manage Work Center Capacity	Manufacturing, Sourcing and Procurement, Supply Chain
Production Planner	Monitor Purchase Contract Items	Sourcing and Procurement, Supply Chain
	Monitor Purchase Order Items	Sourcing and Procurement, Supply Chain
Purchaser	Monitor Purchasing Info Records Price History	Sourcing and Procurement, Supply Chain
	Material Documents Overview	Asset Management, Sales, Sourcing and Procurement, Supply Chain
	Overdue Materials - Stock in Transit	Asset Management, Finance, Manufacturing, Sales, Sourcing and Procurement, Supply Chain
Warehouse Clerk		

Embedded Predictive Analytics



Embedded Predictive Analytics Introduction

Moderate Machine Learning (ML) requirements such as forecasting, prediction, using algorithms, such as classification, regression, and so on, can be handled by **embedded ML in SAP S/4HANA Cloud**



ISLM - Intelligent Scenario Lifecycle Management

PAL - Predictive analysis Library (also called HEMI – HANA Embedded Machine Language Interface)

APL - Automated Predictive Library

Supplier's Delivery Reliability

Reliability of supplier EV Parts Inc. (USSU_V8000) for deliveries of material Y120 Bike (MZ-TG-Y120) to plant Plant 1 US (1710) over past 6 months.

Reliability Analysis

Early	28.31%
Delay	0%
On Time	71.69%

Purchase Order Items (17)

Purchase Order	Item	Material	Supplier	Predicted Delivery Date	Next Delivery Quantity	Order Quantity
4500048897	00010	Trad.Good 10.PD.Third Party (TG10)	Pol...	Date In Past (3 Days Early)	60,000 PC	60,000 PC
4500048955	00001	Y120 Bike (MZ-TG-Y120)	EV	07/12/2021 (18 Days Early)	1,178,000 PC	1,178,000 PC
4520005470	00010	Y121 Bike (MZ-TG-Y121)	EV	Date In Past (7 Days Early)	95,000 PC	95,000 PC
4520005797	00010	Trading Good 0011.PD.Regular Proc. (TG0011)	Dig...	Date In Past (4 Days Early)	100,000 PC	100,000 PC
4520006076	00010	Trad.Good 11.PD.Reg.Trading (TG11)	Dom...	Date In Past (3 Days Early)	10,000 PC	10,000 PC
4520006077	00010	Trad.Good 11.PD.Reg.Trading (TG11)	Dom...	Date In Past (3 Days Early)	20,000 PC	20,000 PC
4520006078	00010	Seat Type of Fork lifter (HALB) (SF-FL-FORKSEA...	Init...	Date In Past (3 Days Early)	1,000 PC	1,000 PC
4520006079	00010	Seat Type of Fork lifter (HALB) (SF-FL-FORKSEA...	Init...	Date In Past (3 Days Early)	1,000 PC	1,000 PC
4520006140	00010	340 Dark Black (K-34000)	Dom...	Date In Past (9 Days Early)	4,000,000 TON	4,000,000 TO
4520006679	00010	A200 Bike Chain & Sprocket set (MZ-TG-A200)	Dig...	Date In Past (2 Days Early)	10,000 EA	10,000 EA
4520006682	00010	A200 Bike Chain & Sprocket set (MZ-TG-A200)	Dig...	Date In Past (2 Days Early)	100,000 EA	100,000 EA

Embedded Predictive Analytics

Scenarios

Predictive Scenarios

Persona	Predictive Scenario	Line of Business	Scope Item
Cash Manager	Check Assigned Liquidity Items (FCLM_RDT_CALI_V1)	Finance	30K
Inventory Manager	Consumption Data for Slow or Non-Moving Materials (MMSLO_CONSUMPTION_02)	Manufacturing	20N
	Stock in Transit material overdue (MATERIAL_OVERDUE_SIT)		
Production Planner	Demand-Driven Replenishment: (INDIV_LEADTIME_STO2)		
Quality Engineer	QM – Defect Code Proposal (QM_DEF_CODE_PRPSL)		
Project Control - Financials	Project Cost Forecast (PROJCOSTFRCAST01)	Research & Development	2Y7
Internal Sales Representative	S/4HANA Sales: Predicted Delivery Processing Delay (PRDTDDELIVPROCGDELAY)	Sales	2YJ
	S/4HANA Sales: Predicted Delivery Creation Delay (PRDTDDELIVCRTNDELAY)		
Sales Manager	Sales Performance – Prediction (SALESVOLUME001)		
	Sales Quotation Conversion Rate (SLSQTANPREDICTION)		
Accounts Payable Accountant	Predictive Scenario for Blocked Invoices with Quantity Variance (MMIV_INVC_QTY_BLK)		2XX
Purchaser	Supplier Delivery Prediction (SUPLRDELIVPREDICT)	Sourcing and Procurement	3FY*
Strategic Buyer	Quantity Contract Consumption (QTY_CONTRACT_CNSMPN)		1QR

*Might requires additional SAP S/4HANA Cloud license

Embedded SAP Analytics Cloud



Embedded SAP Analytics Cloud

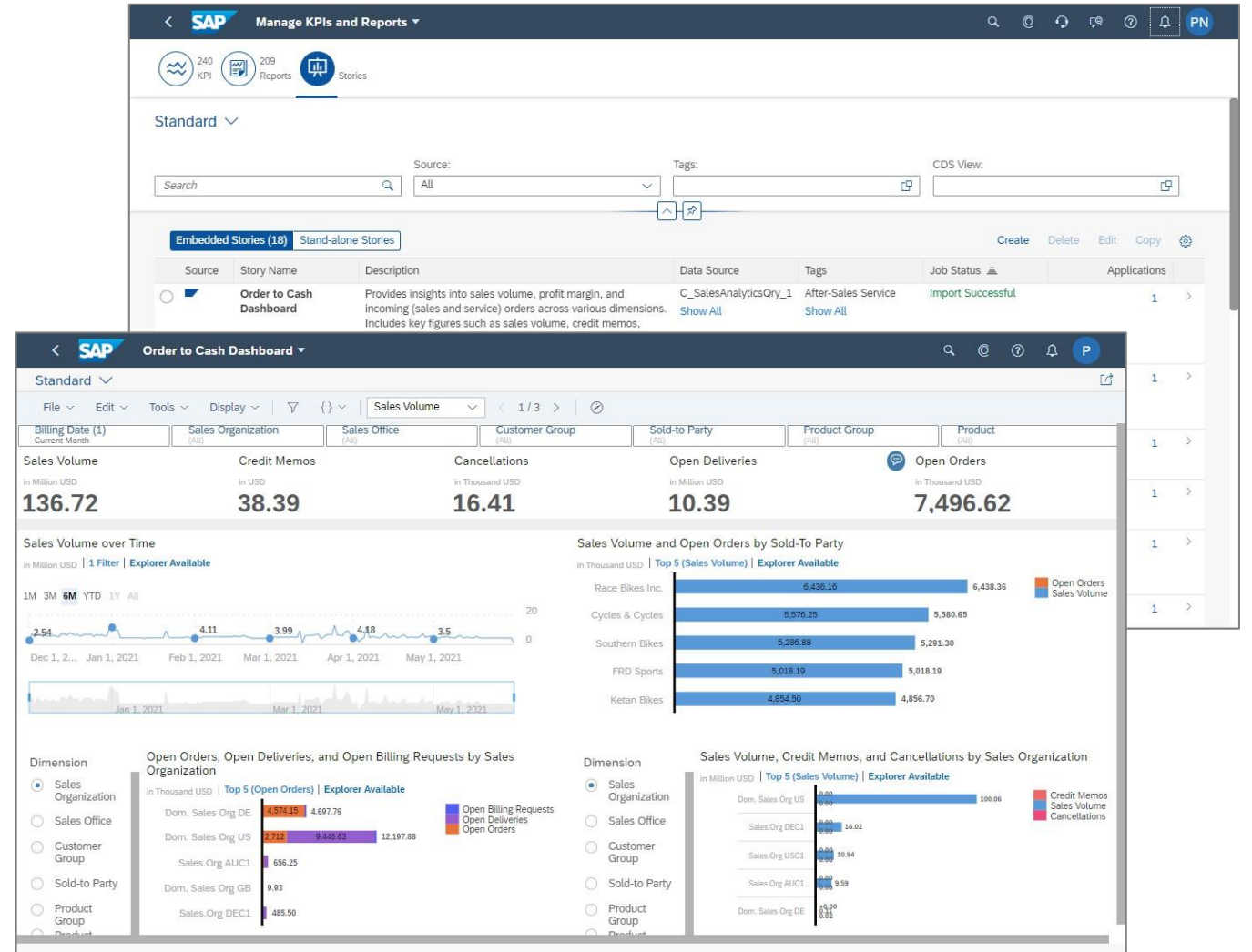
Introduction

All SAP S/4HANA Cloud Customers will receive and auto-provisioned SAP Analytics Cloud (OEM Version) tenant and will receive **pre-built SAP Analytics Cloud dashboards** (Embedded Stories)

Enhances SAP S/4HANA Cloud Embedded Analytics with **SAP Analytics Cloud - based dashboards** (**Stories**) including Fiori paradigms like intent-based navigation and parameter handover

Embedded Stories helps you to discover hidden insights within your data with visualizations for in-depth analysis, and are completely managed by SAP S/4HANA Cloud

Analytics Specialist can copy and adapt existing Embedded Stories or create new ones



Embedded SAP Analytics Cloud

Dashboards

Pre-built Dashboards (Stories)

Persona	Story	Line of Business	Scope Item
Accounts Payable Manager	Aging Report for Accounts Payable		J60
Accounts Receivable Manager	Collections Management Reporting		BFC*
	Dispute Management Reporting		
Contract Specialist - Leasing	Contract and Lease Management Dashboard	Finance	1T6*, 21P*, 21Q*, 21R*, 2O9*, 2SA*, 2SB*, 34N*, 34O*
Credit Controller	Credit Management Reporting		1QM*
Group Accountant	Group Financial Statements		3AF, 1SG*, 3LX, 28B, 3JP, 4VB
Treasury Risk Manager	Treasury Executive Dashboard		1MN*
Sales Manager	Customer Returns Overview	Sales	1BS
	Order to Cash Dashboard		
Strategic Buyer	Purchasing Spend Dashboard	Sourcing and Procurement	1JI

*Might requires additional SAP S/4HANA Cloud license