

SAP S/4HANA Solution Deep Dive

Supply Chain Management

SAP S/4HANA Supply Chain: Overview

Suite LoB Solutions

- additional license
- additional installation

- SAP Integrated Business Planning
- SAP Warehouse Insights
- SAP Warehouse Robotics
- SAP Global Batch Traceability
- SAP Logistics Business Network
- SAP S/4HANA Extended Warehouse Management (side by side for Hub Deployment)
- SAP S/4HANA Transportation Management (side by side for Hub Deployment)

Service Parts Distribution

Plan service parts inventory accurately across distribution networks, based on parts volumes, velocity, and segments; strategically calculate trade-offs between costs and service.

Advanced Warehousing

Deliver the optimal order by leveraging features like cross-docking, workforce management, slotting, inventory optimization, and support for transit warehousing as well as connectivity to warehouse automation equipment.

Advanced Transportation

Improve transportation efficiency by holistically managing all inbound and outbound freight.

Advanced Order Promising

Commit to orders quickly and accurately by automatically considering the relevant stock in real-time, while protecting business priorities and profitability goals.

Inventory

Track and control inventory and stock quantities in a transparent manner and ensure a streamlined material flow across all in and outbound logistics operations.

Warehousing

Store and handle your goods and materials efficiently. Improve asset usage, increase throughput and support accurate on-time order fulfillment with a maximum of transparency.

Delivery and Transportation

Orchestrate all delivery demands, plan and run your transports, using functionality for basic agency billing and subcontracting. Ship the right products to the right place at the right time.

Order Promising

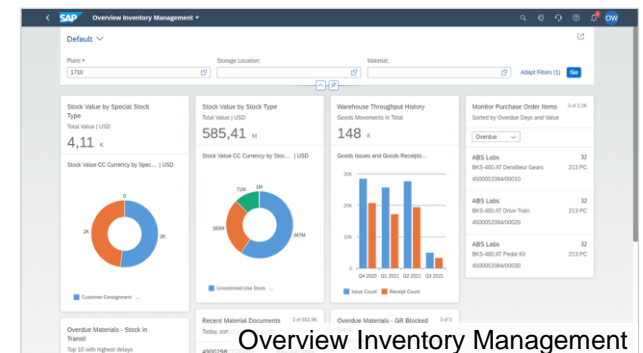
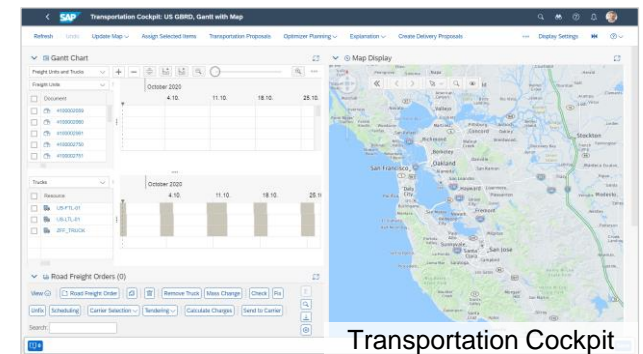
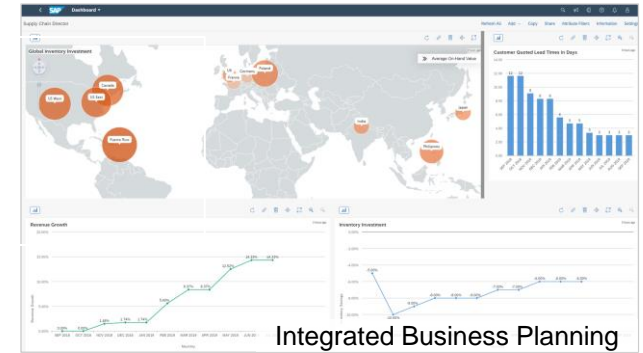
Determine accurate estimates of delivery dates during order creation and changes considering material availability based on actual stock information to enhance customer satisfaction.

Logistics Material Identification

Manage Batches, Serial Numbers and Handling Units to increase efficiency and improve compliance across your shipping and warehousing operations.

Circular Economy Logistics

Track and manage re-usable items like packaging materials or empties along their lifecycle in logistics processes to distribute responsibility and costs among the involved parties.



SAP S/4HANA LoB Apps

- additional license

SAP S/4HANA Enterprise Management

SAP S/4HANA Supply Chain: Business Area Overview

Suite LoB Solutions

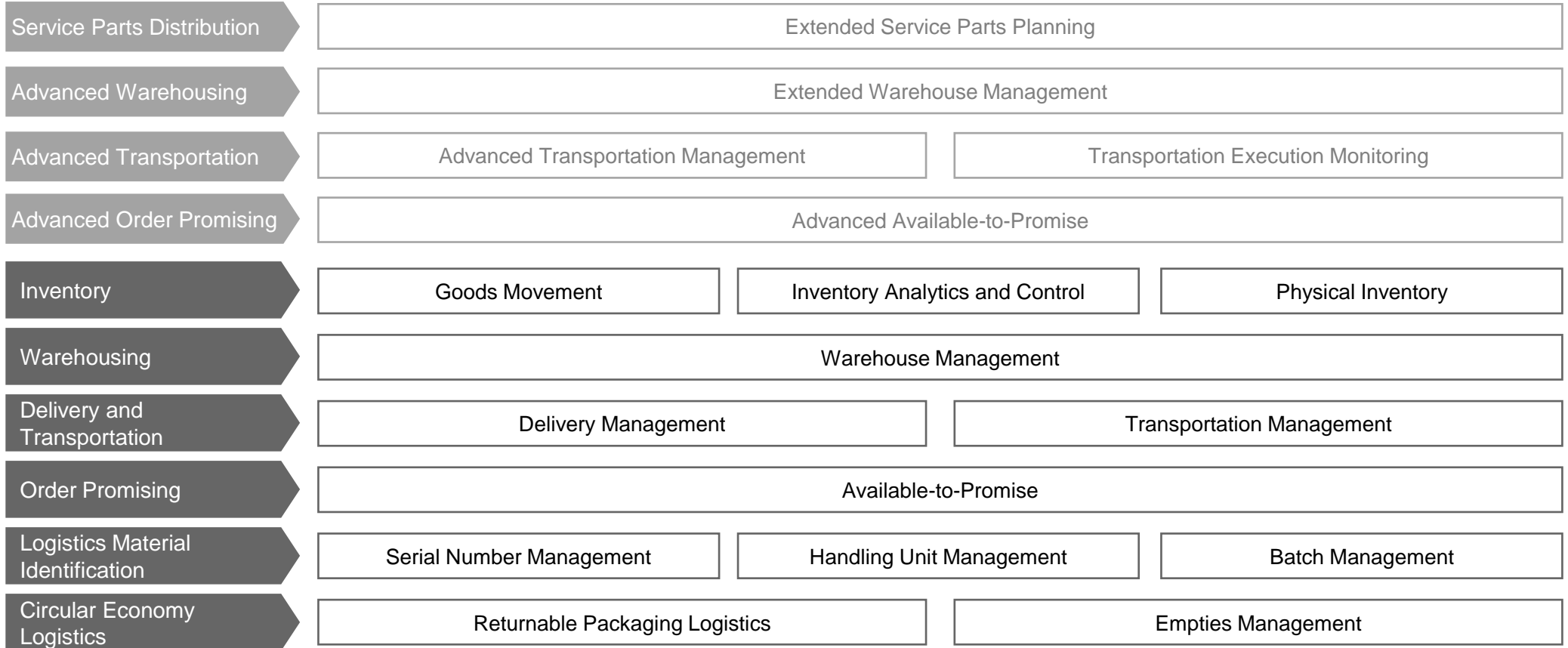
- additional license
- additional installation

- SAP Integrated Business Planning
- SAP Warehouse Insights
- SAP Warehouse Robotics
- SAP Global Batch Traceability
- SAP Logistics Business Network
- SAP S/4HANA Extended Warehouse Management (side by side for Hub Deployment)
- SAP S/4HANA Transportation Management (side by side for Hub Deployment)

SAP S/4HANA LoB Apps

- additional license

SAP S/4HANA Enterprise Management



SAP S/4HANA Supply Chain: Inventory, Warehousing

Inventory

Goods Movement

Inventory Analytics and Control

Physical Inventory

Warehousing

Warehouse Management

Use simplified GI postings for **transfer and scrapping**. Experience real-time, high-volume processing using sensor data. Benefit from locking elimination and **material ledger valuation**. Use simplified apps for

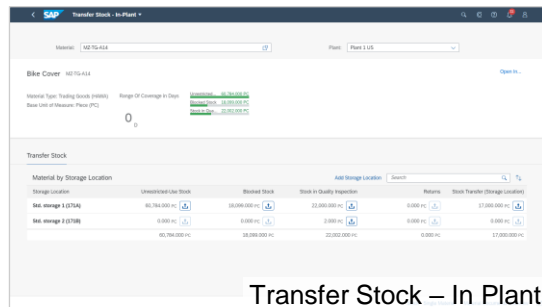
- Goods Receipt for PO
- Initial entry
- Goods Receipt without reference

Experience the power of simplification by using **state-of-the-art analytical apps**, which take full advantage of the **simplified data model** incl. 40-digit mat-no. and the **power of the HANA database**. Optimize inventory and material flows based on **real-time information**. Use simplified apps for

- Dead Stock Analysis
- Slow or Non-Moving Materials

Enable **real-time reporting** on your warehouse stocks and inventory. Record the **physical quantities** of your warehouse stocks (own stock and other stock types). Enable faster and more-efficient **inventory adjustments**.

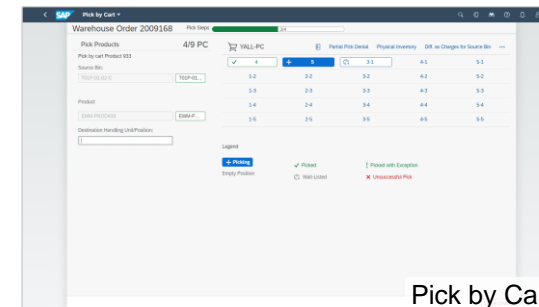
Leverage embedded EWM to perform standardized **inbound & outbound** processing with **internal movements, physical inventory and reporting in one system** (master data, customizing & UX). Track alternative quantities with integrated **Catch Weight Management**.



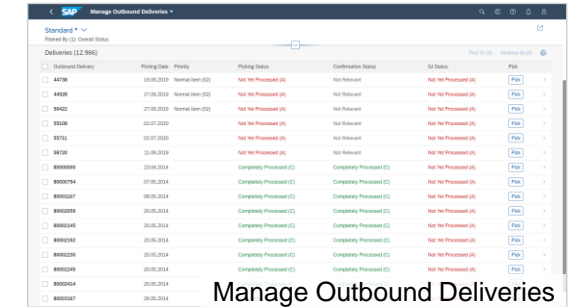
Transfer Stock – In Plant



Slow or Non-Moving Materials



Pick by Cart



Manage Outbound Deliveries

SAP S/4HANA Supply Chain: Delivery and Transport | Order Promising

Delivery and Transportation

Delivery Management

Transportation Management

Order Promising

Available to Promise

Execute and confirm on transportation demands from all sources (Sales Order, Purchase Order, Stock Transport Order) in an automated fashion. Leverage **electronic collaboration** to accelerate the process and **avoid redundancies** and human error.

Leverage **embedded Transportation Management** to handle **freight agreements** and **delivery-based charges** as well as basic bookings, **plan and carry out** your transports, use functionality for **basic agency billing** and **subcontracting** as well as **dangerous goods** management.

Available to promise: **new ATP algorithm** based on HANA embedded in mass component check in production. Improve percentage **on-time delivery**. Leverage **just-in-time** scenarios for inbound and outbound.

The screenshot displays the SAP S/4HANA Load Plan interface. On the left, a table lists loading sequences for various products. On the right, a 3D visualization shows a green truck with a load plan overlaid on its cargo area, indicating the placement and weight of different products.

Item Hierarchy	Loading Sequence	Orientation	Position X	Position Y	Position Z	U...	Deck	Level	Row	Stack	L
Active Vehicle	1	Bottom Straight (...)	0	0	1.200	MM	Upper Deck	0	0	0	
Product 70	2	Bottom Straight (...)	0	800	0	MM	Lower Deck	0	0	0	
Product 80	3	Bottom Straight (...)	1.200	0	1.200	MM	Upper Deck	0	1	0	
Product 90	4	Bottom Straight (...)	0	0	0	MM	Lower Deck	0	0	0	
Product 60	5	Bottom Straight (...)	0	1.600	0	MM	Lower Deck	0	0	0	
Product 50	6	Bottom Straight (...)	0	800	1.200	MM	Upper Deck	0	0	0	
Product 40	7	Bottom Straight (...)	1.200	0	0	MM	Lower Deck	0	1	0	
Product 30	8	Bottom Straight (...)	1.200	800	0	MM	Lower Deck	0	1	0	
Product 20	9	Bottom Straight (...)	1.200	1.600	0	MM	Lower Deck	0	1	0	
Product 10											

3D Visualization Labels:

- 90: 150,00 KG
- 70: 150,00 KG
- 40: 150,00 KG
- 20: 10,00 KG
- 10: 10,00 KG
- 50: 10,00 KG

Load Plan

SAP S/4HANA Supply Chain: Logistics Material Identification, Circular Economy

Logistics Material Identification

Batch Management

Available to promise: **new ATP algorithm based** on HANA embedded in mass component check in production. Improve percentage **on-time delivery**. Leverage **just-in-time** scenarios for inbound and outbound.

Serial Number Management

Available to promise: **new ATP algorithm based** on HANA embedded in mass component check in production. Improve percentage **on-time delivery**. Leverage **just-in-time** scenarios for inbound and outbound.

Handling Unit Management

Available to promise: **new ATP algorithm based** on HANA embedded in mass component check in production. Improve percentage **on-time delivery**. Leverage **just-in-time** scenarios for inbound and outbound.

Manage Batches

Circular Economy Logistics

Returnable Packaging Logistics

Track shipping and receiving of returnable packaging materials to and from business partners. Gain visibility in **materials distribution** and reduce overall volume of materials by integrating logistics information into a **single version of the truth**.

Empties Management

Track empties to and from business partners, capture detailed data, accurately record high-volume transactions for **empties returns and connected deposits**.

Manage Batches

Display Serial Numbers

SAP S/4HANA Supply Chain: LoB Solutions

Advanced Warehousing

Extended Warehouse Management with SAP S/4HANA supports all levels of warehouse complexity. Use the **extended functionality** of **SAP S/4HANA Warehouse Management** to **optimize all warehouse operations** with no data duplication and reconciliation efforts.

Advanced Transportation

Embedded Transportation Management provides **best-of-breed functionality** seamlessly integrated into the digital core, streamlining processes and reducing the need to replicate data to a decentralized TM system. SAP S/4HANA offers modern transportation management to customers, who want to leverage **enhanced transportation** functionality. The new deployment option also allows customers to run advanced transportation management processes embedded in SAP S/4HANA removing the necessity for costly data replication and additional hardware.

Advanced Order Promising

Advanced Order Promising/ATP is a new functionality to optimize the complete Available to Promise process with simplified UI in a harmonized flow. The solution comprises **Availability Check, Backorder Processing, Product Allocation & Release for Delivery**.

Service Parts Distribution

Extended Service Parts Planning (eSPP) provides planning functions specific to service parts and transparency throughout the supply chain, right from the moment demand occurs through to the delivery of the product. It allows to plan inventory across a distribution network based on the part volume, velocity, segments, and other practical business rules. It further supports out of the box business process collaboration for the suppliers.

Additional Suite Solutions in Supply Chain



For Superior Planning and Extended Supply Chain Functions you can also integrate into:

- SAP Integrated Business Planning
- SAP Global Batch Traceability
- SAP Logistics Business Network
- SAP S/4HANA Extended Warehouse Management & SAP S/4HANA Transportation Management (side by side for Hub Deployment)
- SAP Warehouse Insights

